



Passage Roxtec CF 8/32

Passage pour une forte densité de câbles avec un cadre en aluminium.

Les passages de câbles étanches Roxtec CF 8 et CF 32 sont composés de cadres en aluminium coulé et de modules d'étanchéité qui s'adaptent à différentes tailles de câbles.



- Résistant aux rongeurs
- Léger
- Surface optimisée
- Accepte des câbles pré-connectés

Caractéristiques du produit



IP/UL NEMA

Structure d'installation



Armoires et coffrets

Type de fixation



Boulonnage

Classements et certificats

Étanchéité

- IP 66/67, UL/NEMA 4,4X,12,13

Dimensions du cadre

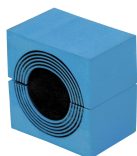
mm/kg

Les variantes de cadre ci-dessous sont une sélection limitée. Pour voir la gamme complète de cadres et de configurations, veuillez visiter [roxtec.com](https://www.roxtec.com).

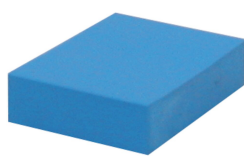
Titre	Ouvertures de cadre	Espace de remplissage	Dimensions externes WxHxD	Dimensions d'ouverture w x h	Poids	N° art.
CF 8	1	40 x 80	75 x 140 x 60	61(+0.5/-0.5) x 127(+0.5/-0.5)	0.6	CSF0000080035
CF 32	2	40 x 160	130 x 230 x 60	110(+0.5/-0.5) x 216(+0.5/-0.5)	1.4	CSF0000320035

Éléments d'étanchéité

Éléments d'étanchéité



Module CM avec Multidiameter™



Module de compensation plein CM



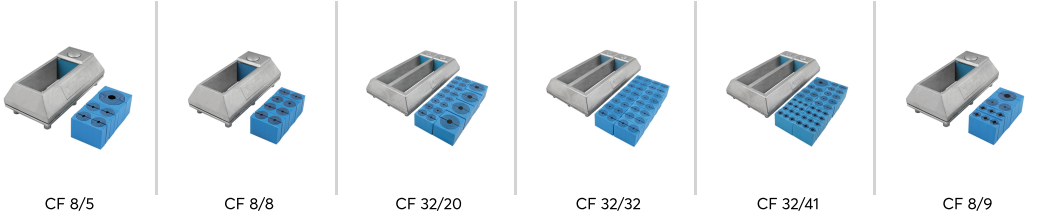
Lubrifiant Roxtec

Pour plus d'informations, veuillez consulter [roxtec.com](https://www.roxtec.com).



Kits de passage préconfigurés

mm/kg



Titre	Configuration	Dimensions externes WxHxD	Dimensions d'ouverture w x h	Poids	N° art.
CF 8/5	1x (9.5-32.5), 4x (3.5-16.5)	75 x 140 x 59	61(+0.5/-0.5) x 127(+0.5/-0.5)	0.8	CKT8000000005
CF 8/8	8x (3.5-16.5)	75 x 140 x 59	61(+0.5/-0.5) x 127(+0.5/-0.5)	0.8	CKT8000000008
CF 32/20	4x (9.5-32.5), 16x (3.5-16.5)	130 x 230 x 59	110(+0.5/-0.5) x 216(+0.5/-0.5)	2	CKT3200000020
CF 32/32	32x (3.5-16.5)	130 x 230 x 59	110(+0.5/-0.5) x 216(+0.5/-0.5)	2	CKT3200000032
CF 32/41	1x (9.5-32.5), 24x (3.5-10.5), 16x (3.5-16.5)	130 x 230 x 59	110(+0.5/-0.5) x 216(+0.5/-0.5)	2	CKT3200000041
CF 8/9	2x (3.5-16.5), 1x (10.0-25.0), 6x (3.5-10.5)	75 x 140 x 59	61(+0.5/-0.5) x 127(+0.5/-0.5)	0.8	CKT0000000009

The product information provided by Roxtec does not release the purchaser of the Roxtec system, or part thereof, from the obligation to independently determine the suitability of the products for the intended process, installation and/or use. Roxtec gives no guarantee for the Roxtec system or any part thereof and assumes no liability for any loss or damage whatsoever, whether direct, indirect, consequential, loss of profit or otherwise, occurred or caused by the Roxtec systems or installations containing components not manufactured by an authorized manufacturer and/or occurred or caused by the use of the Roxtec system in a manner or for an application other than for which the Roxtec system was designed or intended. Roxtec expressly excludes any implied warranties of merchantability and fitness for a particular purpose and all other express or implied representations and warranties provided by statute or common law. User determines suitability of the Roxtec system for intended use and assumes all risk and liability in connection therewith. In no event shall Roxtec be liable for indirect, consequential, punitive, special, exemplary or incidental damages or losses. The Roxtec products are offered and sold in accordance with the conditions of the Roxtec General Terms of Sales. The latest version of the Roxtec General Terms of Sales can be downloaded from <https://www.roxtec.com/en/about-us/about-roxtec/general-terms-of-sales/> We reserve the right to make changes to the product and technical information without further notice. Any errors in print or entry are no claims for indemnity. The content of this publication is the property of Roxtec International AB and is protected by copyright. This document was generated on: 2024-04-06